

- Table legs 70x70x800 x 4 @ 25.00 /Lm
- Table top 720x1300x22 @ 17.60 /Lm
- Dropsides 360x1300x20 x 2 @17.60 /Lm
- Side 38x100x700 x 2
- End 38x100x600 x 2
- Supports 30x38x300 x 4
- Pivot pins 8x60 steel x 4

Top and side view	McIntyre Consulting			
	Dropside Table			
Drawn by	SIZE	FSCM NO	DWG NO	REV
Peter McIntyre	A4		pjm2009001	A
	SCALE	1:10	SHEET	1 OF 4

4

3

2

1

D

D

C

C

B

B

A

A

Milled edges to remove tongue and grooves

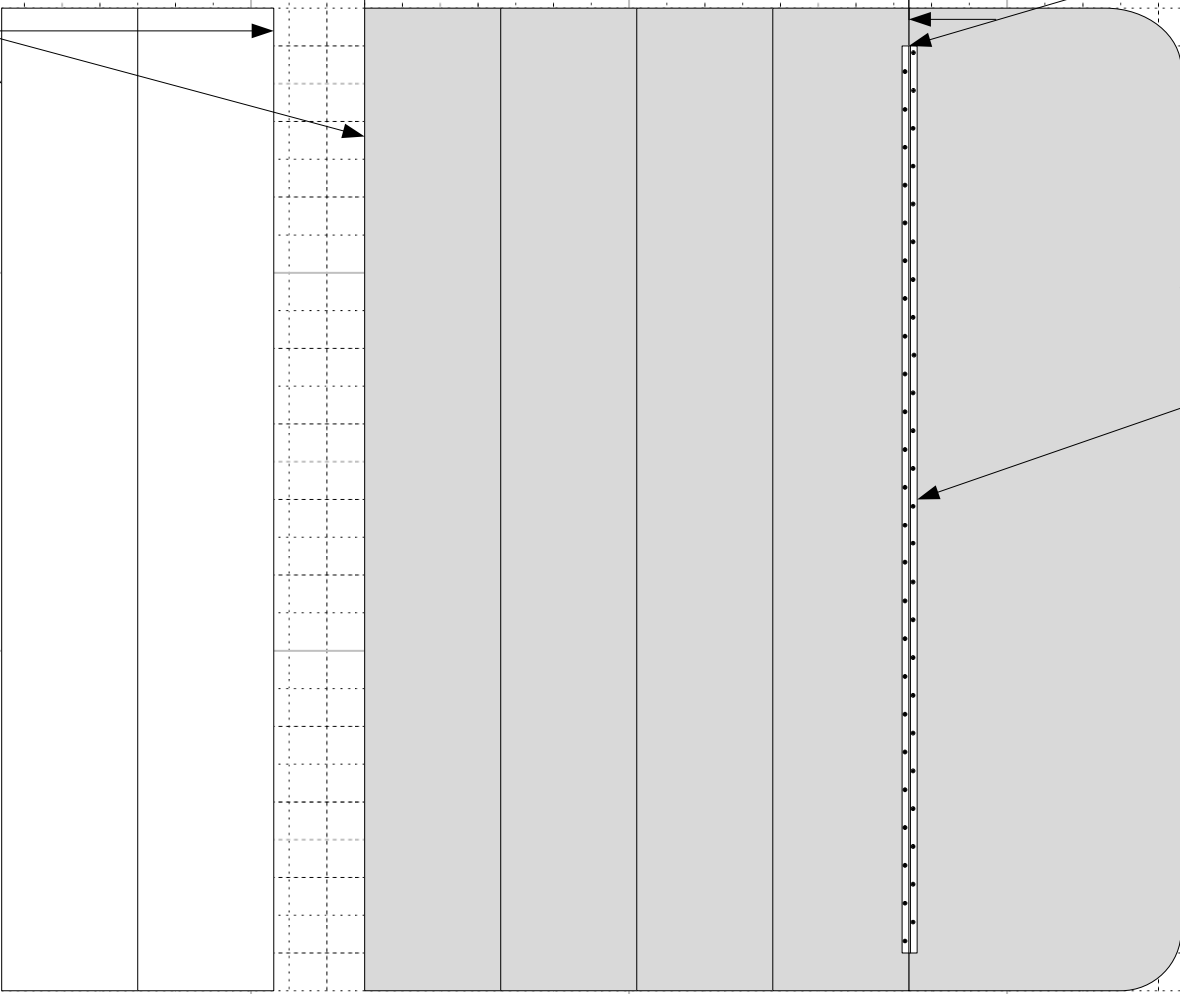
720

360

Milled edges to remove tongue and grooves

Router the edge 20mm all round 6mm deep

Router the hinge depth to suit hiding the hinge



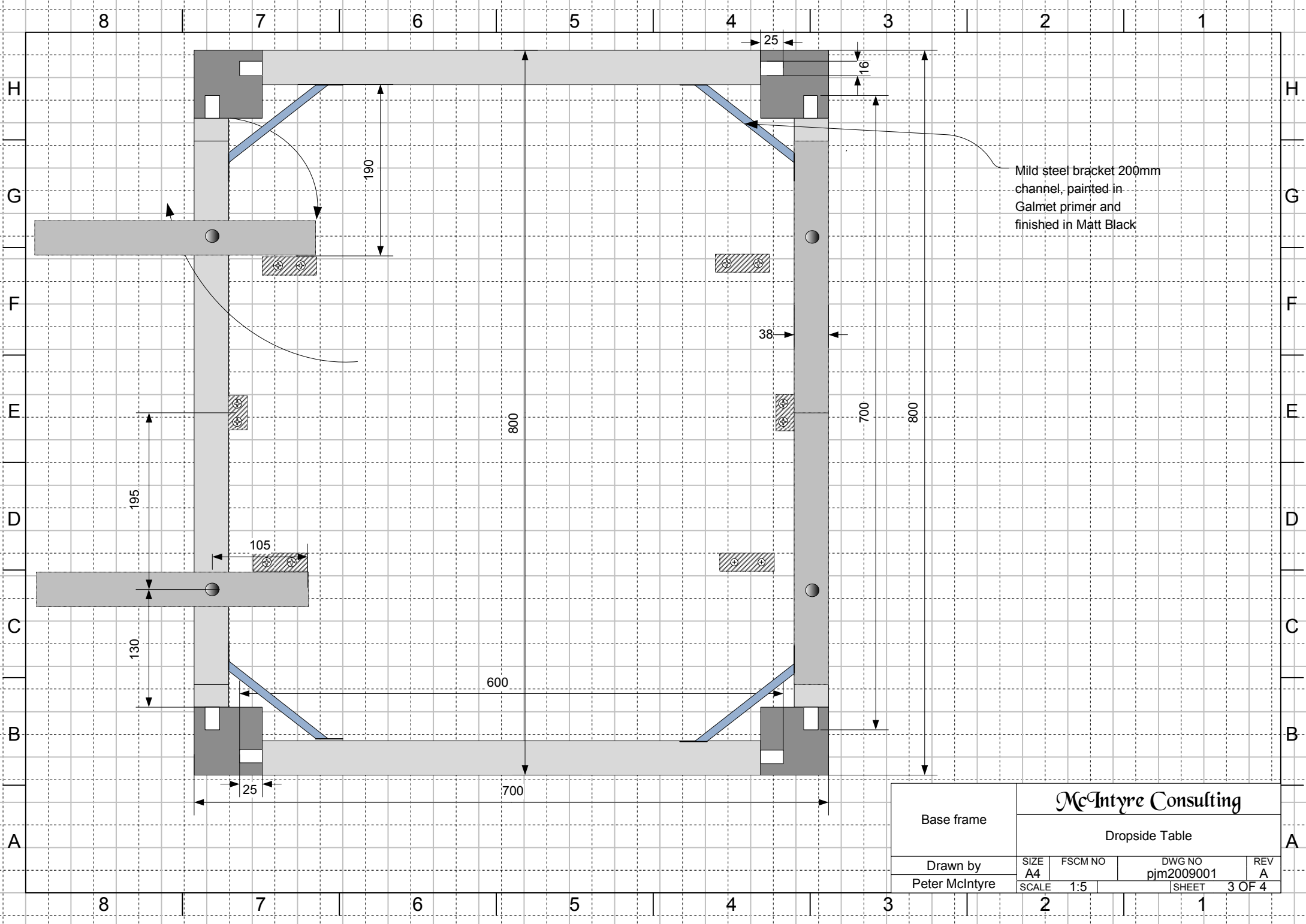
McIntyre Consulting					
Dropside Table					
Drawn by		SIZE	FSCM NO	DWG NO	REV
Peter McIntyre		A4		pjm2009001	A
		SCALE	10:1	SHEET	2 OF 4

4

3

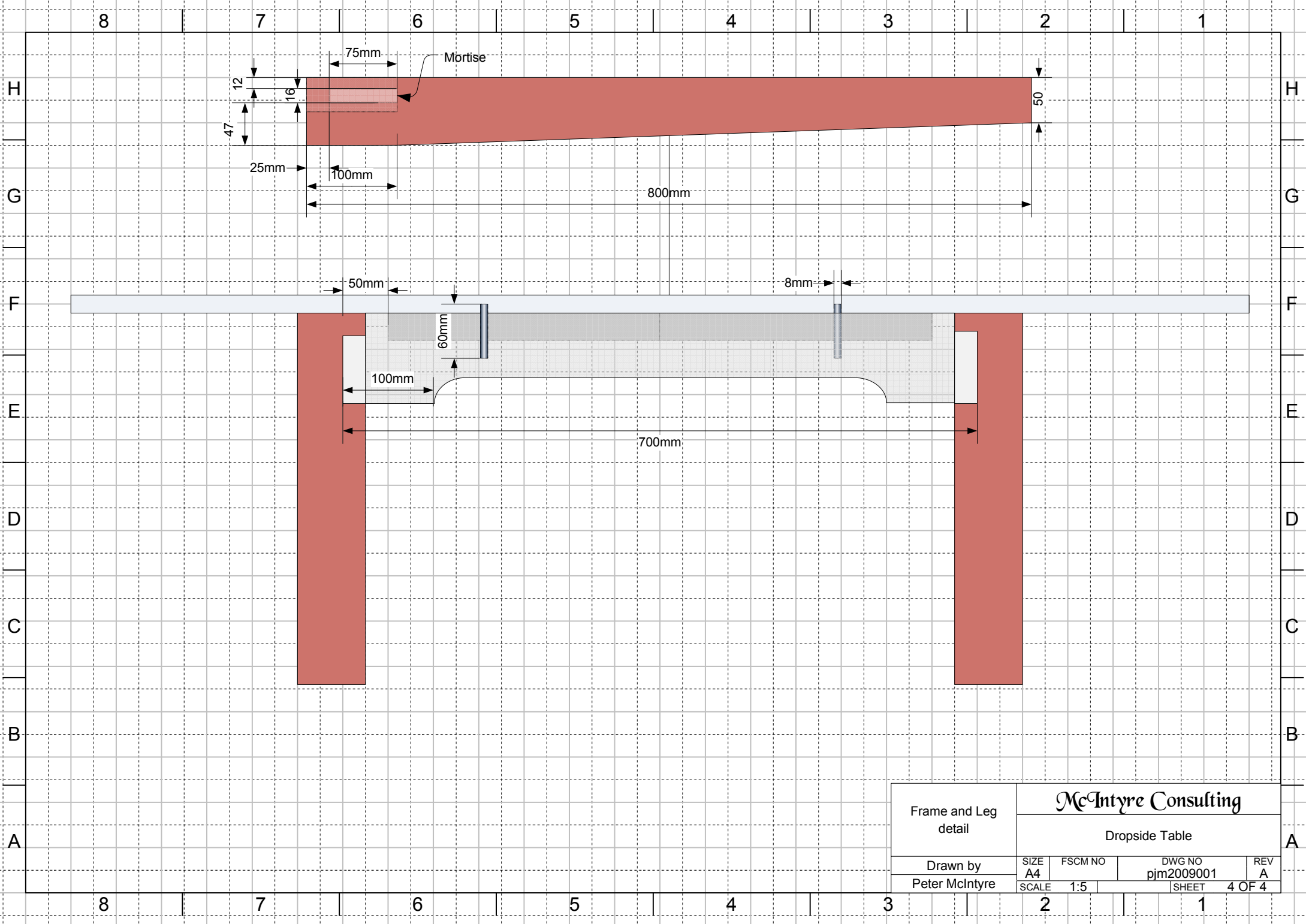
2

1



Mild steel bracket 200mm channel, painted in Galmet primer and finished in Matt Black

Base frame	McIntyre Consulting			
	Dropside Table			
Drawn by Peter McIntyre	SIZE A4	FSCM NO	DWG NO pjm2009001	REV A
	SCALE 1:5	SHEET		3 OF 4



8 7 6 5 4 3 2 1

H H

G G

F F

E E

D D

C C

B B

A A

8 7 6 5 4 3 2 1

Frame and Leg detail	<i>McIntyre Consulting</i>			
	Dropside Table			
Drawn by Peter McIntyre	SIZE A4	FSCM NO	DWG NO pjm2009001	REV A
	SCALE 1:5		SHEET	4 OF 4